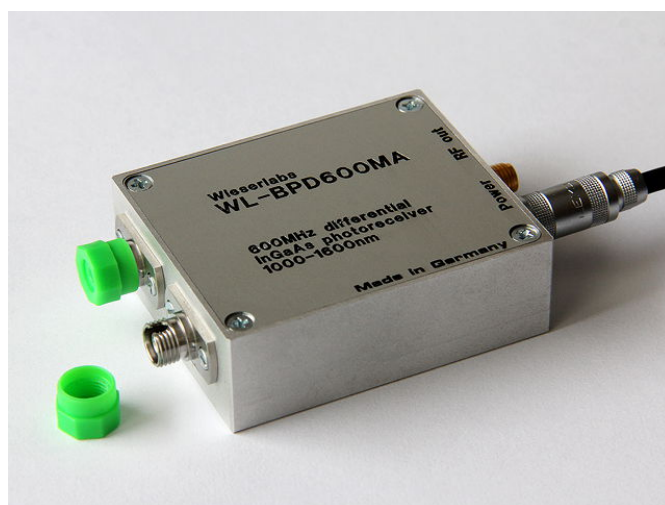


## 600 MHz Dual-Balanced InGaAs Low Noise Photodetector

### Features

- High transimpedance gain: 3500 V/W (1550 nm)
- Low noise: below -130 dBm/Hz
- NEP: 20 pW/ $\sqrt{\text{Hz}}$  typ.
- 600 MHz bandwidth
- AC coupled; low cutoff below 300 kHz
- Wavelength range: 1000 nm to 1700 nm
- Fiber Coupled: FC receptacles
- Output: 50  $\Omega$  SMA plug
- Wide range single supply: 11 to 15 V



### Typical Application

- Ultrahigh speed SS-OCT imaging
- Can be used single-ended as well

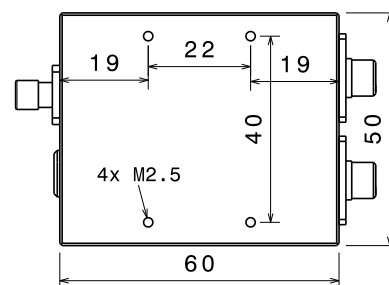
### General Description

The BPD600MA is an AC-coupled high-speed dual-balanced InGaAs photoreceiver. Due to its high transimpedance gain, its very low noise, and its bandwidth of typically 620 MHz, it is ideally suited for future ultrahigh speed swept-source OCT systems with depth scan line rates up to above 1 MHz.

The BPD600MA comes in a rugged aluminum case with two FC fiber receptacles and a 50  $\Omega$  SMA output. It operates from a single 11–15 V DC supply. OEM versions without a case are available upon request.

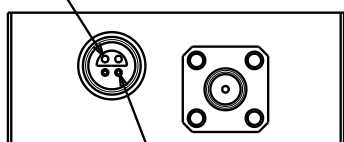
### Mechanical Properties

- Fiber coupling: FC receptacles for FC/PC and FC/APC connectors
- RF output: SMA (female)
- Supply voltage input: Push-pull LEMO plug (included with diode)
- Small form factor: 50×60×20 mm
- Mounting: 4x M2.5 threaded holes on bottom (screw length 4 mm)



### Electrical Connectors

Positive supply



Supply ground

Supply connector (front view). The case is electrically connected to ground.

There are two types of supply cable, one has 2 wires and one has 5 wires. The corresponding color scheme of these cables is:

Cable type	Positive supply	Supply ground
2-wire	white	brown, shield
5-wire	yellow	grey, shield

**Wieserlabs UG** (haftungsbeschränkt)

web: [www.wieserlabs.com](http://www.wieserlabs.com)

e-mail: [info@wieserlabs.com](mailto:info@wieserlabs.com)

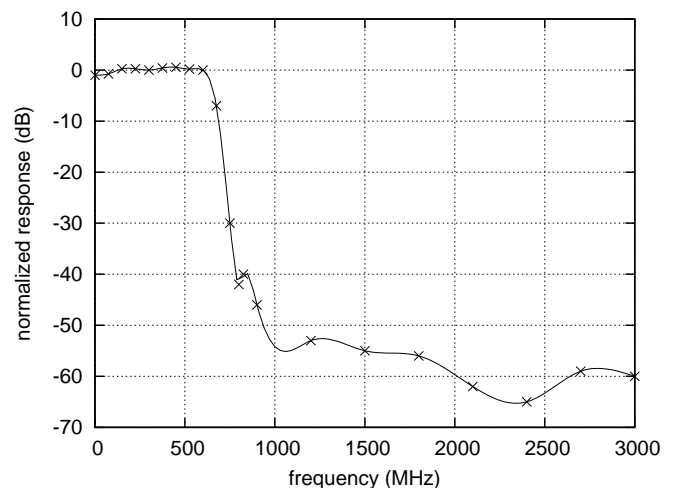
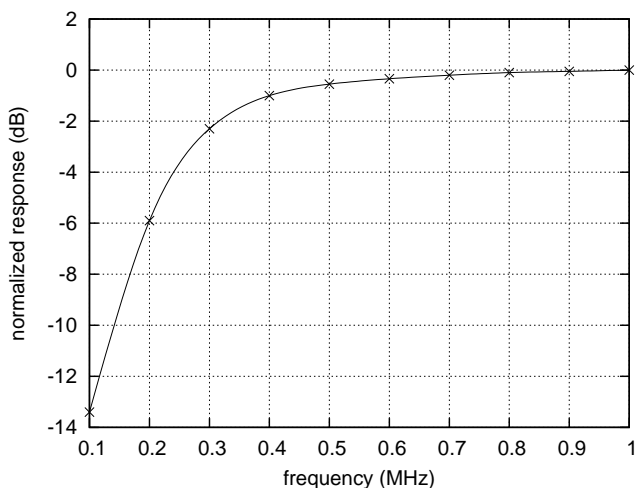
The information provided in this data sheet is believed to be accurate and reliable. However, no responsibility is assumed for its use, for inaccuracies and omissions, nor for any infringements of patents or other rights of third parties that may result from its use. Prices and specifications are subject to change without notice. Trademarks and registered trademarks are the property of their respective owners.

## Specifications

Parameter	Conditions	Min	Typ	Max	Units
DC Characteristics					
Supply Voltage ( $V_S$ )		11		15	V
Supply Current			110		mA
AC Characteristics					
3dB Bandwidth		600	620	670	MHz
AC Low Frequency Cutoff			260	300	kHz
Output IP3			28		dBm
2nd Harmonic	$P_{out} = 0$ dBm		-40		dBc
	$P_{out} = -10$ dBm		-53		dBc
3rd Harmonic	$P_{out} = 0$ dBm		-45		dBc
	$P_{out} = -10$ dBm		-47		dBc
Noise Spectral Density	1 MHz – 800 MHz		-130	-125	dBm/Hz
	> 800 MHz			-150	dBm/Hz
Noise Equivalent Power (NEP)	1 MHz – 600 MHz, 1550 nm		20	35	pW/ $\sqrt{\text{Hz}}$
Output Impedance			50		$\Omega$
Optical Characteristics					
Input Wavelength Range		1000		1700	nm
Transimpedance Gain	wavelength 1550 nm		3500		V/ $W_{optic}$
	wavelength 1310 nm		3300		V/ $W_{optic}$
Common Mode Rejection Ratio		25	30		dB
Maximum Input Power	(damage threshold)	10			mW

## Typical Performance Characteristics

### Frequency response: RF output power versus frequency



Test conditions: Light input 100  $\mu$ W at 1310 nm, modulated via EOM.